

1-8 Proper Use of the Sealer

Use only as described in “1-8 Proper Use of the Sealer.”

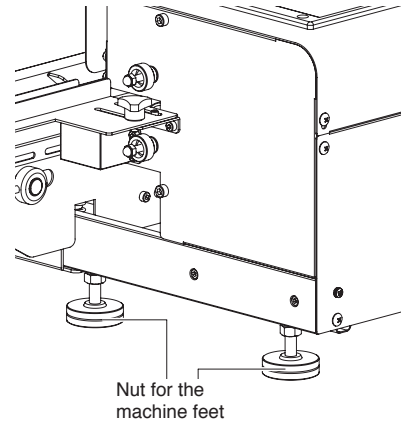
There is a risk of danger and malfunctions may result if the machine is used not in accordance with this manual.

1-8-1 Setting the machine

Place the machine on a flat, horizontal working table.

When the machine is not stabilized, loosen the nuts that secures the machine feet and adjust the height of the legs so the machine is stabilized.

After the adjustment, securely tighten the nuts and fix the machine feet. Confirm if the seal and conveyer belts are tightened. If they are loosened, adjust with the pulling knob.



1-8-2 Adjust the conveyer and seal gauge positions

Please adjust the conveyer position with the conveyer height adjustment knob and conveyer front/back adjustment knob.

Please refer to “1-10-1 Adjust the conveyer position” for the detail.

The distance from the edge of the pouch to the seal line can be adjusted by adjusting the seal gauge position. Please refer to “1-10-2 Adjust the seal gauge position” for the detail.

1-8-3 Plugging in the electrical power cord

Insert the electric power plug fully into the wall outlet. Please make sure the electrical outlet has adequate current carrying capacity as described at “1-1 Specification.”



There is a danger of fire if the electrical power source does not meet proper specifications.

1-8-4 Turn ON the power switch

Press the power switch on the top of the machine. The control unit display will turn ON.



The sealer will not operate if the upper cover is open for the safety reason.



If the control unit display is on when the upper cover is open, please stop operating the machine and contact Fuji Impulse or your local dealer.

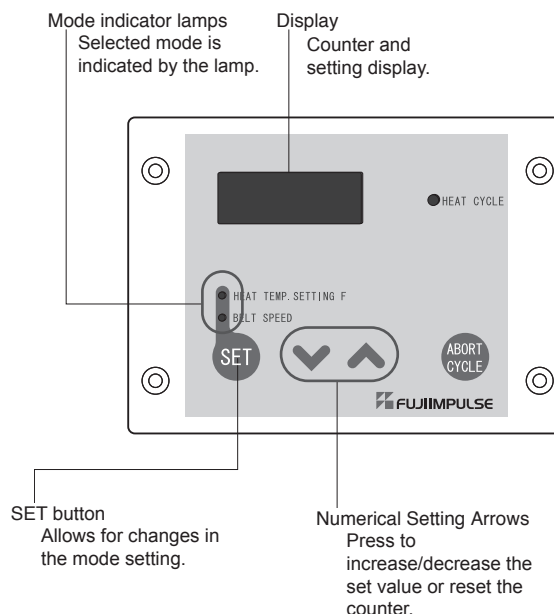
1-8-5 Set the seal condition with the control unit

Set the sealing condition in the following procedures.

Set the heating temperature and belt speed with the control unit. Depending on the pouch/film thickness and material, the set value will differ. Please adjust the setting every time you change the pouch/film.

- Pressing the SET button changes the modes in the following order:
COUNTER → HEATING TEMP → BELT SPEED
- The mode indicator lamps show which mode is currently being displayed. If no lamp is lit, the machine is in the counter mode.
- The counter counts the number of bag when the bag is inserted, but the counter is saved as in a memory when the conveyer stops.

Attention! Please noted that the counter value will not be saved if the ABORT CYCLE button is pressed or the power switch is turned OFF before the conveyer stops.



■ Setting the heating temperature

- Activate the "heating temperature" mode. Use ▲ /▼ arrows to set the heating temperature. [Setting range : 60-170°C /140-338F]
- Optimum heating temperature will differ depending on the pouch/film thickness and material.
- Set the heating temperature at minimum required to make a sufficient seal. The excessive heating can damage the consumable parts.

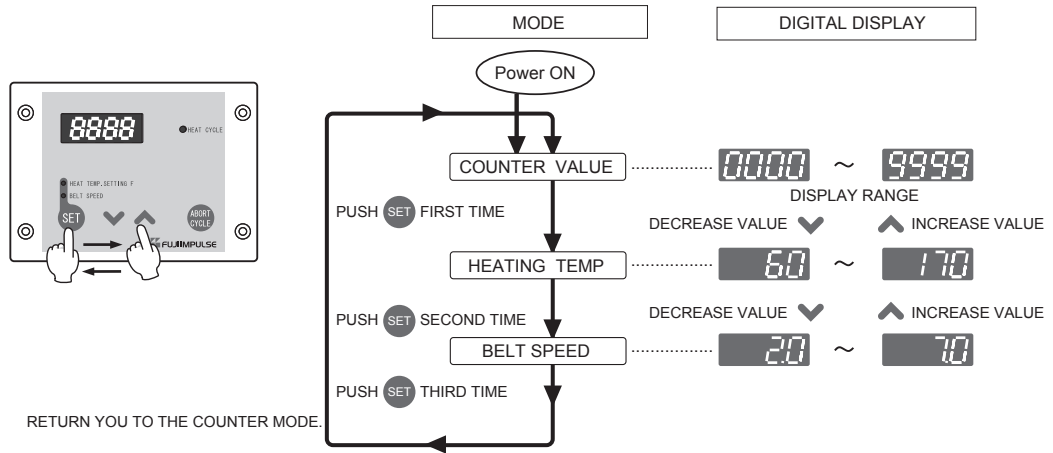
Attention! Setting the heating temperature higher than 150°C (302F) will limit the belt speed: e.g.) When the HT is 160°C (330F) - Belt speed cannot be set faster than 4.5m/min. When the HT is 170°C (338F) - Belt speed cannot be set faster than 2m/min.

Attention! Please adjust the belt speed lower when the pouch/film is thick and the sufficient sealing cannot be made just by increasing the set heating temperature.

■ Setting the belt speed

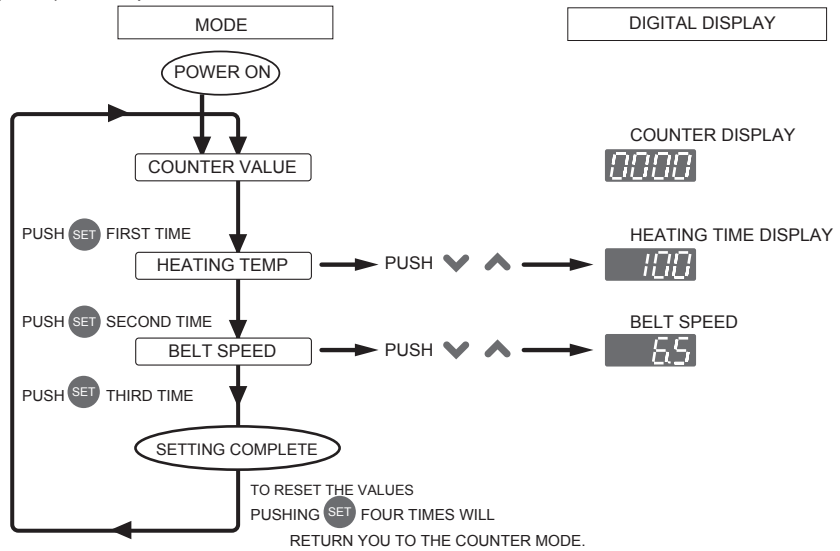
- Activate the "belt speed" mode. Use ▲/▼ arrows to set the belt speed. [Setting range : 2.0 - 0.7M/ min (in 0.1M increments.)]

Setting the different modes



Example)

Settings : Heating Temperature 100°C (121F). Belt speed 6.5m/min.



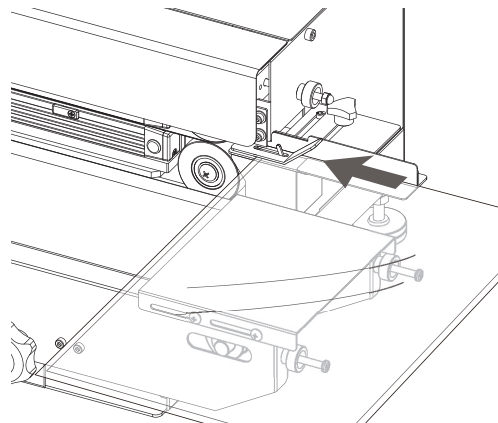
1-8-6 Perform sealing operation

By inserting the film to from the film inserting part along to the seal gauge, the film detection switch will be activated. Slide the film inside until the belt clamps the edge of the pouch.



Be careful not to wind in your finger with the roller when operating.

Decide the optimum sealing condition through the several seal tests. Set with the control unit referring to “1-8-5 Set the seal condition with the control unit.”



1-8-7 Turn OFF the power switch

After finishing operation, always turn OFF the power switch.

Unplug the power outlet in the case not using the machine for a while.

1-8-8 Inspection after operation

After use, please clean up the parts. Inspect parts such as the belt to make sure that they are not damaged. If the parts appear to be damaged, replace them if necessary.